

Complete Kits - S.S. Kit A Complete

COMPLETE KITS - S.S. KIT A COMP



*Kit A Complete comes with ClipCap, ClipFlashing, Drop-Ins, ClipSnout-Tee and choice of liner length and 16 stainless steel screws, all packaged in our "Octo" box.

*316 TI Stainless Steel Flexible Liner Available on Request: 2" - 3" 1/8" - 3 7/8" - 4 1/2" - 5 1/4" - 7 1/2" - 7 3/4" - 8 7/8" - 9" - 10" - 12" - 14" - 16".

Diameter	KIT	20'	25'	30'	35'	40'	45'	50'
3"	A							
	CODE	SSLI0320A	SSLI0325A	SSLI0330A	SSLI0335A	SSLI0340A	SSLI0345A	SSLI0350A
4"	A							
	CODE	SSLI0420A	SSLI0425A	SSLI0430A	SSLI0435A	SSLI0440A	SSLI0445A	SSLI0450A
5"	A							
	CODE	SSLI0520A	SSLI0525A	SSLI0530A	SSLI0535A	SSLI0540A	SSLI0545A	SSLI0550A
5.5"	A							
	CODE	SSLI05.520A	SSLI05.525A	SSLI05.530A	SSLI05.535A	SSLI05.540A	SSLI05.545A	SSLI05.550A
6"DD	A							
	CODE	SSLI0620A	SSLI0625A	SSLI0630A	SSLI0635A	SSLI0640A	SSLI0645A	SSLI0650A
6"REG	A							
	CODE	SSLI06R20A	SSLI06R25A	SSLI06R30A	SSLI06R35A	SSLI06R40A	SSLI06R45A	SSLI06R50A
7"	A							
	CODE	SSLI0720A	SSLI0725A	SSLI0730A	SSLI0735A	SSLI0740A	SSLI0745A	SSLI0750A
8"	A							
	CODE	SSLI0820A	SSLI0825A	SSLI0830A	SSLI0835A	SSLI0840A	SSLI0845A	SSLI0850A

Complete Kits - S.S. Kit B Fireplace



*Kit B Fireplace comes with ClipCap, ClipFlashing, Drop-In, StoveStarter with Locking Rod (Insert Collar) and choice of liner length and 10 stainless steel screws, all packaged in our "Octo" box.

*316 TI Stainless Steel Flexible Liner Available on Request: 2" - 3" 1/8" - 3 7/8" - 4 1/2" - 5 1/4" - 7 1/2" - 7 3/4" - 8 7/8" - 9" - 10" - 12" - 14" - 16".

COMPLETE KITS - S.S. KIT B FIRE

Diameter	KIT	20'	25'	30'	35'	40'	45'	50'
3"	B							
	CODE	SSLI0320B	SSLI0325B	SSLI0330B	SSLI0335B	SSLI0340B	SSLI0345B	SSLI0350B
4"	B							
	CODE	SSLI0420B	SSLI0425B	SSLI0430B	SSLI0435B	SSLI0440B	SSLI0445B	SSLI0450B
5"	B							
	CODE	SSLI0520B	SSLI0525B	SSLI0530B	SSLI0535B	SSLI0540B	SSLI0545B	SSLI0550B
5.5"	B							
	CODE	SSLI05.520B	SSLI05.525B	SSLI05.530B	SSLI05.535B	SSLI05.540B	SSLI05.545B	SSLI05.550B
6"DD	B							
	CODE	SSLI0620B	SSLI0625B	SSLI0630B	SSLI0635B	SSLI0640B	SSLI0645B	SSLI0650B
6"REG	B							
	CODE	SSLI06R20B	SSLI06R25B	SSLI06R30B	SSLI06R35B	SSLI06R40B	SSLI06R45B	SSLI06R50B
7"	B							
	CODE	SSLI0720B	SSLI0725B	SSLI0730B	SSLI0735B	SSLI0740B	SSLI0745B	SSLI0750B
8"	B							
	CODE	SSLI0820B	SSLI0825B	SSLI0830B	SSLI0835B	SSLI0840B	SSLI0845B	SSLI0850B

Complete Kits - S.S. Kit F Gas

COMPLETE KITS - S.S. KIT F GAS

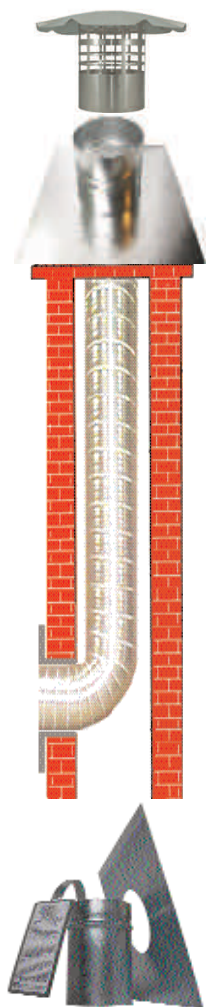


*Kit F Complete comes with ClipCap, ClipFlashing, Drop-In, Mortar Guard, Wall Plate and choice of liner length and 16 stainless steel screws, all packaged in our "Octo" box.

*316 TI Stainless Steel Flexible Liner Available on Request: 2" - 3" 1/8" - 3 7/8" - 4 1/2" - 5 1/4" - 7 1/2" - 7 3/4" - 8 7/8" - 9" - 10" - 12" - 14" - 16".

Diameter	KIT	20'	25'	30'	35'	40'	45'	50'
3"	F							
	CODE	SSLI0320F	SSLI0325F	SSLI0330F	SSLI0335F	SSLI0340F	SSLI0345F	SSLI0350F
4"	F							
	CODE	SSLI0420F	SSLI0425F	SSLI0430F	SSLI0435F	SSLI0440F	SSLI0445F	SSLI0450F
5"	F							
	CODE	SSLI0520F	SSLI0525F	SSLI0530F	SSLI0535F	SSLI0540F	SSLI0545F	SSLI0550F
5.5"	F							
	CODE	SSLI05.520F	SSLI05.525F	SSLI05.530F	SSLI05.535F	SSLI05.540F	SSLI05.545F	SSLI05.550F
6"DD	F							
	CODE	SSLI0620F	SSLI0625F	SSLI0630F	SSLI0635F	SSLI0640F	SSLI0645F	SSLI0650F
6"REG	F							
	CODE	SSLI06R20F	SSLI06R25F	SSLI06R30F	SSLI06R35F	SSLI06R40F	SSLI06R45F	SSLI06R50F
7"	F							
	CODE	SSLI0720F	SSLI0725F	SSLI0730F	SSLI0735F	SSLI0740F	SSLI0745F	SSLI0750F
8"	F							
	CODE	SSLI0820F	SSLI0825F	SSLI0830F	SSLI0835F	SSLI0840F	SSLI0845F	SSLI0850F

Complete Kits - Alum. Complete



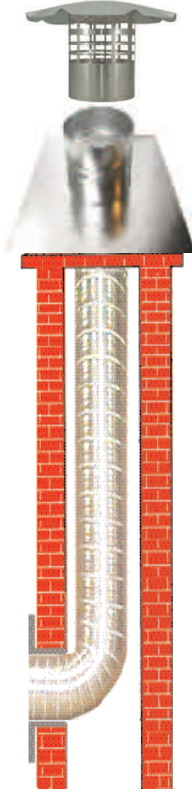
DIAMETER	20'	25'	30'	35'	40'	45'	50'
3"							
CODE	ALLI0320C	ALLI0325C	ALLI0330C	ALLI0335C	ALLI0340C	ALLI0345C	ALLI0350C
4"							
CODE	ALLI0420C	ALLI0425C	ALLI0430C	ALLI0435C	ALLI0440C	ALLI0445C	ALLI0450C
5"							
CODE	ALLI0520C	ALLI0525C	ALLI0530C	ALLI0535C	ALLI0540C	ALLI0545C	ALLI0550C
5.5"							
CODE	ALLI05.520C	ALLI05.525C	ALLI05.530C	ALLI05.535C	ALLI05.540C	ALLI05.545C	ALLI05.550C
6"							
CODE	ALLI0620C	ALLI0625C	ALLI0630C	ALLI0635C	ALLI0640C	ALLI0645C	ALLI0650C
7"							
CODE	ALLI0720C	ALLI0725C	ALLI0730C	ALLI0735C	ALLI0740C	ALLI0745C	ALLI0750C
8"							
CODE	ALLI0820C	ALLI0825C	ALLI0830C	ALLI0835C	ALLI0840C	ALLI0845C	ALLI0850C

* Aluminum Complete comes with Rain Cap, Flashing, Mortar Guard, Wall Plate and choice of liner length.

COMPLETE KITS - ALUM. COMP.

Complete Kits - Alum. Fireplace

COMP. KITS - ALUM. FIREPLACE



DIAMETER	20'	25'	30'	35'	40'	45'	50'
3"							
CODE	ALLI0320FP	ALLI0325FP	ALLI0330FP	ALLI0335FP	ALLI0340FP	ALLI0345FP	ALLI0350FP
4"							
CODE	ALLI0420FP	ALLI0425FP	ALLI0430FP	ALLI0435FP	ALLI0440FP	ALLI0445FP	ALLI0450FP
5"							
CODE	ALLI0520FP	ALLI0525FP	ALLI0530FP	ALLI0535FP	ALLI0540FP	ALLI0545FP	ALLI0550FP
5.5"							
CODE	ALLI05.520FP	ALLI05.525FP	ALLI05.530FP	ALLI05.535FP	ALLI05.540FP	ALLI05.545FP	ALLI05.550FP
6"							
CODE	ALLI0620FP	ALLI0625FP	ALLI0630FP	ALLI0635FP	ALLI0640FP	ALLI0645FP	ALLI0650FP
7"							
CODE	ALLI0720FP	ALLI0725FP	ALLI0730FP	ALLI0735FP	ALLI0740FP	ALLI0745FP	ALLI0750FP
8"							
CODE	ALLI0820FP	ALLI0825FP	ALLI0830FP	ALLI0835FP	ALLI0840FP	ALLI0845FP	ALLI0850FP

* Aluminum Fireplace comes with Rain Cap, Flashing and choice of liner length.

Kits - S.S. Kit A

Application: Oil or Free Standing Stove



KITS - S.S. KIT A

Code	Description	Price
SSKIT03A	3" Clipcap / 3" Flashing / 3" ClipSnoutTee/ 3" Drop-Ins	
SSKIT04A	4" Clipcap / 4" Flashing / 4" ClipSnoutTee/ 4" Drop-Ins	
SSKIT05A	5" Clipcap / 5" Flashing / 5" ClipSnoutTee/ 5" Drop-Ins	
SSKIT05.5A	5.5" Clipcap / 5.5" Flashing / 5.5" ClipSnoutTee/ 5.5" Drop-Ins	
SSKIT06A	6" DD Clipcap / 6"DD Flashing / 6" DD ClipSnoutTee/ 6"DD Drop-Ins	
SSKIT06RA	6" REG Clipcap / 6" REG Flashing / 6" REG ClipSnoutTee/ 6"REG Drop-Ins	
SSKIT07A	7" Clipcap / 7" Flashing / 7" ClipSnoutTee/ 7" Drop-Ins	
SSKIT08A	8" Clipcap / 8" Flashing / 8" ClipSnoutTee/ 8" Drop-Ins	

*** Also available in 9" / 10" / 12" / 14" & 16" = 24 Gauge Stainless Steel**

*** Kit comes with S.S. Screws, Installation Manual, Warranty and Service Card.**

Kits - S.S. Kit B

Application: Fireplace Insert



KITS - S.S. Kit B

Code	Description	Price
SSKIT03B	3" Clipcap / 3" Flashing / 3" StoveStarter / 3" Drop-In	
SSKIT04B	4" Clipcap / 4" Flashing / 4" StoveStarter / 4" Drop-In	
SSKIT05B	5" Clipcap / 5" Flashing / 5" StoveStarter with Locking Rod / 5" Drop-In	
SSKIT05.5B	5.5" Clipcap / 5.5" Flashing / 5.5" StoveStarter with Locking Rod / 5.5" Drop-In	
SSKIT06B	6" DD Clipcap / 6" DD Flashing / 6" DD StoveStarter with Locking Rod / 6" DD Drop-Ins	
SSKIT06RB	6" REG Clipcap / 6" REG Flashing / 6" REG Stovestarter with locking Rod / 6" REG Drop-In	
SSKIT07B	7" Clipcap / 7" Flashing / 7" StoveStarter / 7" Drop-In	
SSKIT08B	8" Clipcap / 8" Flashing / 8" StoveStarter / 8" Drop-In	

- * Also available in 9" / 10" / 12" / 14" & 16" = 24 Gauge Stainless Steel
- * Kit comes with S.S. Screws, Installation Manual, Warranty and Service Card.
- * StoveStarter with Locking Rod only available on 5"-6"REG.

Kits - S.S. Kit E



KITS - S.S. KIT E

Code	Description	Price
SSKIT03E	3" Clipcap / 3" Flashing / 3" Drop-In	
SSKIT04E	4" Clipcap / 4" Flashing / 4" Drop-In	
SSKIT05E	5" Clipcap / 5" Flashing / 5" Drop-In	
SSKIT05.5E	5.5" Clipcap / 5.5" Flashing / 5.5" Drop-In	
SSKIT06E	6" DD Clipcap / 6" DD Flashing / 6" DD Drop-In	
SSKIT06RE	6" REG Clipcap / 6" REG Flashing / 6" REG Drop-In	
SSKIT07E	7" Clipcap / 7" Flashing / 7" Drop-In	
SSKIT08E	8" Clipcap / 8" Flashing / 8" Drop-In	

* Also available in 9" / 10" / 12" / 14" & 16" = 24 Gauge Stainless Steel

* Kit comes with S.S. Screws, Installation Manual, Warranty and Service Card.

Kits - S.S. Kit F

Application: Gas



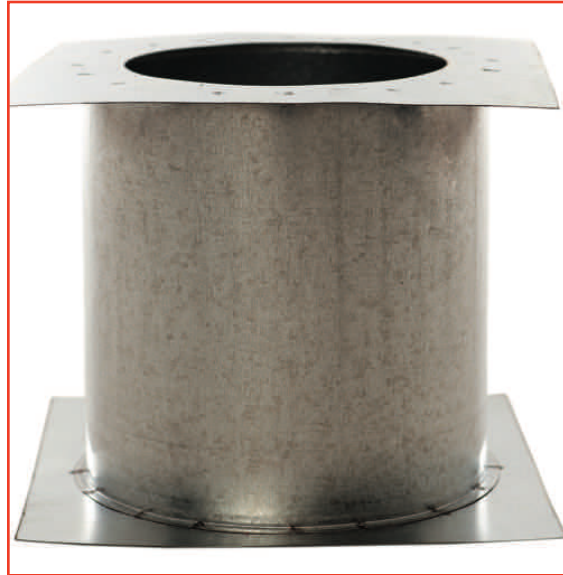
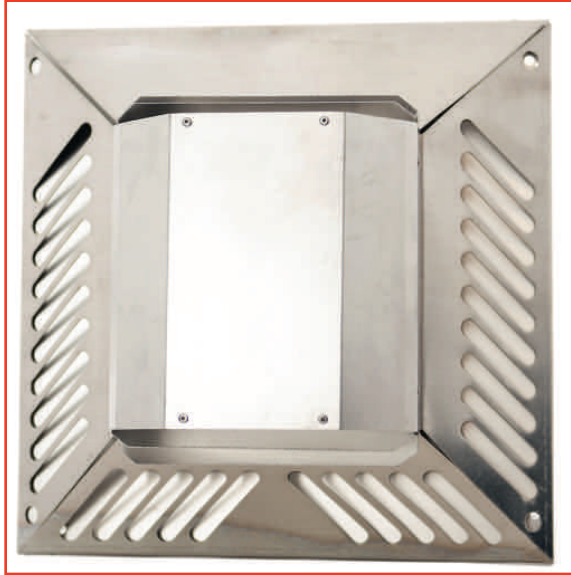
KITS - S.S. KIT F

Code	Description	Price
SSKIT03F	3" Clipcap / 3" Flashing / 3" Drop-In / 3" S.S. Mortar Guard / 3" S.S. Wallplate	
SSKIT04F	4" Clipcap / 4" Flashing / 4" Drop-In / 4" S.S. Mortar Guard / 4" S.S. Wallplate	
SSKIT05F	5" Clipcap / 5" Flashing / 5" Drop-In / 5" S.S. Mortar Guard / 5" S.S. Wallplate	
SSKIT05.5F	5.5" Clipcap / 5.5" Flashing / 5.5" Drop-In / 5.5" S.S. Mortar Guard / 5.5" S.S. Wallplate	
SSKIT06F	6"DD Clipcap / 6"DD Flashing / 6"DD Drop-In / 6"DD S.S. Mortar Guard / 6"DD S.S. Wallplate	
SSKIT06RF	6"REG Clipcap / 6"REG Flashing / 6"REG Drop-In / 6"REG S.S. Mortar Guard / 6"REG S.S. Wallplate	
SSKIT07F	7" Clipcap / 7" Flashing / 7" Drop-In / 7" S.S. Mortar Guard / 7" S.S. Wallplate	
SSKIT08F	8" Clipcap / 8" Flashing / 8" Drop-In / 8" S.S. Mortar Guard / 8" S.S. Wallplate	

*** Also available in 9" / 10" / 12" / 14" & 16" = 24 Gauge Stainless Steel**

*** Kit comes with S.S. Screws, Installation Manual, Warranty and Service Card.**

Kits - Direct Vent Horizontal Termination



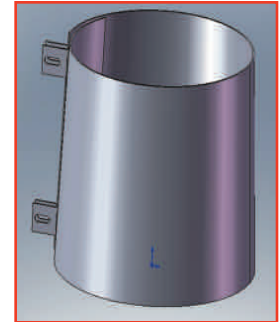
KITS - DIRECT VENT HORIZONTAL

Code	Description	Price
DVS47KITN	4"-7" Hor. Termination Cap / 7" Wallthimble / 7" Wallplate	

*** See Direct Vent (FLEX) for liner sizes and options.(Page 18)**

Kits - Direct Vent Vertical Termination

KITS - DIRECT VENT VERTICAL



Code	Description
DVR47K	4"-7" Vert. Termination Cap / 7" Offset Flashing / 4"-7" x36" Extension / 7" Storm Collar / Extension Support Bracket

*** See Direct Vent (RIGID) for liner sizes and options.(Page 19)**

LINERS - Stainless Steel

316 TI Stainless Steel Flexible Liner



Code	Description	Price
SSLI0320	3" Flexible Liner x 20' Long	
SSLI0325	3" Flexible Liner x 25' Long	
SSLI0330	3" Flexible Liner x 30' Long	
SSLI0335	3" Flexible Liner x 35' Long	
SSLI0340	3" Flexible Liner x 40' Long	
SSLI0345	3" Flexible Liner x 45' Long	
SSLI0350	3" Flexible Liner x 50' Long	
Code	Description	Price
SSLI0420	4" Flexible Liner x 20' Long	
SSLI0425	4" Flexible Liner x 25' Long	
SSLI0430	4" Flexible Liner x 30' Long	
SSLI0435	4" Flexible Liner x 35' Long	
SSLI0440	4" Flexible Liner x 40' Long	
SSLI0445	4" Flexible Liner x 45' Long	
SSLI0450	4" Flexible Liner x 50' Long	
Code	Description	Price
SSLI0520	5" Flexible Liner x 20' Long	
SSLI0525	5" Flexible Liner x 25' Long	
SSLI0530	5" Flexible Liner x 30' Long	
SSLI0535	5" Flexible Liner x 35' Long	
SSLI0540	5" Flexible Liner x 40' Long	
SSLI0545	5" Flexible Liner x 45' Long	
SSLI0550	5" Flexible Liner x 50' Long	
Code	Description	Price
SSLI05.520	5.5" Flexible Liner x 20' Long	
SSLI05.525	5.5" Flexible Liner x 25' Long	
SSLI05.530	5.5" Flexible Liner x 30' Long	
SSLI05.535	5.5" Flexible Liner x 35' Long	
SSLI05.540	5.5" Flexible Liner x 40' Long	
SSLI05.545	5.5" Flexible Liner x 45' Long	
SSLI05.550	5.5" Flexible Liner x 50' Long	

LINERS - STAINLESS STEEL

LINERS - Stainless Steel

316 TI Stainless Steel Flexible Liner

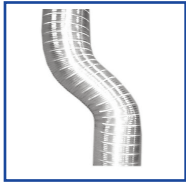


LINERS - STAINLESS STEEL

Code	Description	Price
SSLI0620	6" O.D. Flexible Liner x 20' Long	
SSLI0625	6" O.D. Flexible Liner x 25' Long	
SSLI0630	6" O.D. Flexible Liner x 30' Long	
SSLI0635	6" O.D. Flexible Liner x 35' Long	
SSLI0640	6" O.D. Flexible Liner x 40' long	
SSLI0645	6" O.D. Flexible Liner x 45' Long	
SSLI0650	6" O.D. Flexible Liner x 50' Long	
Code	Description	Price
SSLI0620R	6" REG Flexible Liner x 20' Long	
SSLI0625R	6" REG Flexible Liner x 25' Long	
SSLI0630R	6" REG Flexible Liner x 30' Long	
SSLI0635R	6" REG Flexible Liner x 35' Long	
SSLI0640R	6" REG Flexible Liner x 40' Long	
SSLI0645R	6" REG Flexible Liner x 45' Long	
SSLI0650R	6" REG Flexible Liner x 50' Long	
Code	Description	Price
SSLI0720	7" Flexible Liner x 20' Long	
SSLI0725	7" Flexible Liner x 25' Long	
SSLI0730	7" Flexible Liner x 30' Long	
SSLI0735	7" Flexible Liner x 35' Long	
SSLI0740	7" Flexible Liner x 40' Long	
SSLI0745	7" Flexible Liner x 45' Long	
SSLI0750	7" Flexible Liner x 50' Long	
Code	Description	Price
SSLI0820	8" Flexible Liner x 20' Long	
SSLI0825	8" Flexible Liner x 25' Long	
SSLI0830	8" Flexible Liner x 30' Long	
SSLI0835	8" Flexible Liner x 35' Long	
SSLI0840	8" Flexible Liner x 40' Long	
SSLI0845	8" Flexible Liner x 45' Long	
SSLI0850	8" Flexible Liner x 50' Long	

LINERS - Aluminum

Aluminum Chimney FLEXible Liner

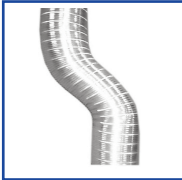


Code	Description	Price
ALLI0320	3" Flexible Liner x 20' Long	
ALLI0325	3" Flexible Liner x 25' Long	
ALLI0330	3" Flexible Liner x 30' Long	
ALLI0335	3" Flexible Liner x 35' Long	
ALLI0340	3" Flexible Liner x 40' Long	
ALLI0345	3" Flexible Liner x 45' Long	
ALLI0350	3" Flexible Liner x 50' Long	
Code	Description	Price
ALLI0420	4" Flexible Liner x 20' Long	
ALLI0425	4" Flexible Liner x 25' Long	
ALLI0430	4" Flexible Liner x 30' Long	
ALLI0435	4" Flexible Liner x 35' Long	
ALLI0440	4" Flexible Liner x 40' Long	
ALLI0445	4" Flexible Liner x 45' Long	
ALLI0450	4" Flexible Liner x 50' Long	
Code	Description	Price
ALLI0520	5" Flexible Liner x 20' Long	
ALLI0525	5" Flexible Liner x 25' Long	
ALLI0530	5" Flexible Liner x 30' Long	
ALLI0535	5" Flexible Liner x 35' Long	
ALLI0540	5" Flexible Liner x 40' Long	
ALLI0545	5" Flexible Liner x 45' Long	
ALLI0550	5" Flexible Liner x 50' Long	
Code	Description	Price
ALLI05.520	5.5" Flexible Liner x 20' Long	
ALLI05.525	5.5" Flexible Liner x 25' Long	
ALLI05.530	5.5" Flexible Liner x 30' Long	
ALLI05.535	5.5" Flexible Liner x 35' Long	
ALLI05.540	5.5" Flexible Liner x 40' Long	
ALLI05.545	5.5" Flexible Liner x 45' Long	
ALLI05.550	5.5" Flexible Liner x 50' Long	

LINERS - Aluminum

LINERS - Aluminum

Aluminum Chimney FLEXible Liner



Code	Description	Price
ALLI0620	6" O.D. Flexible Liner x 20' Long	
ALLI0625	6" O.D. Flexible Liner x 25' Long	
ALLI0630	6" O.D. Flexible Liner x 30' Long	
ALLI0635	6" O.D. Flexible Liner x 35' Long	
ALLI0640	6" O.D. Flexible Liner x 40' long	
ALLI0645	6" O.D. Flexible Liner x 45' Long	
ALLI0650	6" O.D. Flexible Liner x 50' Long	
Code	Description	Price
ALLI0720	7" Flexible Liner x 20' Long	
ALLI0725	7" Flexible Liner x 25' Long	
ALLI0730	7" Flexible Liner x 30' Long	
ALLI0735	7" Flexible Liner x 35' Long	
ALLI0740	7" Flexible Liner x 40' Long	
ALLI0745	7" Flexible Liner x 45' Long	
ALLI0750	7" Flexible Liner x 50' Long	
Code	Description	Price
ALLI0820	8" Flexible Liner x 20' Long	
ALLI0825	8" Flexible Liner x 25' Long	
ALLI0830	8" Flexible Liner x 30' Long	
ALLI0835	8" Flexible Liner x 35' Long	
ALLI0840	8" Flexible Liner x 40' Long	
ALLI0845	8" Flexible Liner x 45' Long	
ALLI0850	8" Flexible Liner x 50' Long	

* 316 TI Stainless Steel Flexible Liner & Aluminum Liner Diameters Also Available on Request: 2" - 3" 1/8" - 3 7/8" - 4 1/2" - 5 1/4" - 7 1/2" - 7 3/4" - 8 7/8" - 9" - 10" - 12" - 14" - 16".

LINERS - ALUMINUM

LINERS - Rigid

Laser Welded Seamless 26 Gauge Stainless Steel Liners



LINERS - RIGID

Code	Description	Price
TCL103	3" Rigid Pipe x 12" Long	
TCL203	3" Rigid Pipe x 24" Long	
TCL303	3" Rigid Pipe x 36" Long	
TCL403	3" Rigid Pipe x 48" Long	
Code Description Price		
TCL104	4" Rigid Pipe x 12" Long	
TCL204	4" Rigid Pipe x 24" Long	
TCL304	4" Rigid Pipe x 36" Long	
TCL404	4" Rigid Pipe x 48" Long	
Code Description Price		
TCL105	5" Rigid Pipe x 12" Long	
TCL205	5" Rigid Pipe x 24" Long	
TCL305	5" Rigid Pipe x 36" Long	
TCL405	5" Rigid Pipe x 48" Long	
Code Description Price		
TCL106	6" Rigid Pipe x 12" Long	
TCL206	6" Rigid Pipe x 24" Long	
TCL306	6" Rigid Pipe x 36" Long	
TCL406	6" Rigid Pipe x 48" Long	
Code Description Price		
TCL107	7" Rigid Pipe x 12" Long	
TCL207	7" Rigid Pipe x 24" Long	
TCL307	7" Rigid Pipe x 36" Long	
TCL407	7" Rigid Pipe x 48" Long	
Code Description Price		
TCL108	8" Rigid Pipe x 12" Long	
TCL208	8" Rigid Pipe x 24" Long	
TCL308	8" Rigid Pipe x 36" Long	
TCL408	8" Rigid Pipe x 48" Long	

LINERS - Rigid Adjustable

Laser Welded Seamless 26 Gauge Stainless Steel Liners



LINERS - RIGID ADJUSTABLE

Code	Description	Price
TCLADJ1203	3" Rigid Pipe x 12" Long Adjustable	
TCLADJ2403	3" Rigid Pipe x 24" Long Adjustable	
TCLADJ3603	3" Rigid Pipe x 36" Long Adjustable	
TCLADJ4803	3" Rigid Pipe x 48" Long Adjustable	
Code	Description	Price
TCLADJ1204	4" Rigid Pipe x 12" Long Adjustable	
TCLADJ2404	4" Rigid Pipe x 24" Long Adjustable	
TCLADJ3604	4" Rigid Pipe x 36" Long Adjustable	
TCLADJ4804	4" Rigid Pipe x 48" Long Adjustable	
Code	Description	Price
TCLADJ1205	5" Rigid Pipe x 12" Long Adjustable	
TCLADJ2405	5" Rigid Pipe x 24" Long Adjustable	
TCLADJ3605	5" Rigid Pipe x 36" Long Adjustable	
TCLADJ4805	5" Rigid Pipe x 48" Long Adjustable	
Code	Description	Price
TCLADJ1206	6" Rigid Pipe x 12" Long Adjustable	
TCLADJ2406	6" Rigid Pipe x 24" Long Adjustable	
TCLADJ3606	6" Rigid Pipe x 36" Long Adjustable	
TCLADJ4806	6" Rigid Pipe x 48" Long Adjustable	
Code	Description	Price
TCLADJ1207	7" Rigid Pipe x 12" Long Adjustable	
TCLADJ2407	7" Rigid Pipe x 24" Long Adjustable	
TCLADJ3607	7" Rigid Pipe x 36" Long Adjustable	
TCLADJ4807	7" Rigid Pipe x 48" Long Adjustable	
Code	Description	Price
TCLADJ1208	8" Rigid Pipe x 12" Long Adjustable	
TCLADJ2408	8" Rigid Pipe x 24" Long Adjustable	
TCLADJ3608	8" Rigid Pipe x 36" Long Adjustable	
TCLADJ4808	8" Rigid Pipe x 48" Long Adjustable	

* Rigid Liners & Rigid Liners Adjustable Also Available on Request: 9" - 10" - 12" - 14" - 16".

* Also Available in 24 Gauge Stainless Steel.

* For A View Of Adjustable Pipe Please Visit Our Website.

LINERS - Direct Vent (Flex)



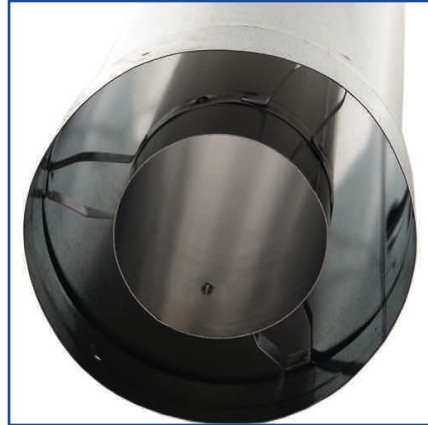
LINERS - DIRECT VENT (FLEX)

CODE	Diam.	X	Diam.	X	Length	Price
DVS4703	4	X	7	X	3	
DVS4705	4	X	7	X	5	
DVS4707	4	X	7	X	7	
DVS4710	4	X	7	X	10	
DVS4715	4	X	7	X	15	
DVS4720	4	X	7	X	20	
DVS4725	4	X	7	X	25	
DVS4730	4	X	7	X	30	
DVS4735	4	X	7	X	35	
DVS4740	4	X	7	X	40	
DVS4745	4	X	7	X	45	
DVS4750	4	X	7	X	50	
DVS4805	4	X	8	X	5	
DVS4807	4	X	8	X	7	
DVS4812	4	X	8	X	12	
DVS4815	4	X	8	X	15	
DVS5805	5	X	8	X	5	
DVS5807	5	X	8	X	7	
DVS5810	5	X	8	X	10	
DVS5815	5	X	8	X	15	
DVS5820	5	X	8	X	20	
DVS5825	5	X	8	X	25	
DVS5830	5	X	8	X	30	
DVS5835	5	X	8	X	35	
DVS5840	5	X	8	X	40	
DVS5845	5	X	8	X	45	
DVS5850	5	X	8	X	50	

*Direct Vent Liners also available in 3"-6" / 4"-6^{5/8}" / 4^{1/4}"-6^{7/8}" / 4^{1/4}"-7^{1/4}" / 4^{1/2}"-7^{1/2}"

LINERS - Direct Vent (Rigid)

LINERS - DIRECT VENT (RIGID)



CODE	Description	Price
DVLI04-712"	4"-7" x 12" Long Direct Vent Rigid Pipe	
DVLI04-724"	4"-7" x 24" Long Direct Vent Rigid Pipe	
DVLI04-736"	4" - 7" x 36" Long Direct Vent Rigid Pipe	
DVLI04-748"	4" - 7" x 48" Long Direct Vent Rigid Pipe	
DVLI05-812"	5" - 8" x 12" Long Direct Vent Rigid Pipe	
DVLI05-824"	5" - 8" x 24" Long Direct Vent Rigid Pipe	
DVLI05-836"	5" - 8" x 36" Long Direct Vent Rigid Pipe	
DVLI05-848"	5" - 8" x 48" Long Direct Vent Rigid Pipe	

*4" Aluminum smooth interior pipe combined with a 7" galvanized outer pipe for easy painting.

Accessories- Rain Caps

Stainless Steel ClipCap™



Code	Description	Price
SSRC03H	3" Stainless Steel 26 G Rain ClipCap™	
SSRC04H	4" Stainless Steel 26 G Rain ClipCap™	
SSRC05H	5" Stainless Steel 26 G Rain ClipCap™	
SSRC05.5H	5½" Stainless Steel 26 G Rain ClipCap™	
SSRC06H	6" O.D. Stainless Steel 26 G Rain ClipCap™	
SSRC06RH	6" REG Stainless Steel 26 G Rain ClipCap™	
SSRC07H	7" Stainless Steel 26 G Rain ClipCap™	
SSRC08H	8" Stainless Steel 26 G Rain ClipCap™	

Aluminum Rain Cap



Code	Description	Price
ALRC03	3" Aluminum Rain Cap	
ALRC04	4" Aluminum Rain Cap	
ALRC05	5" Aluminum Rain Cap	
ALRC05.5	5½" Aluminum Rain Cap	
ALRC06	6" Aluminum Rain Cap	
ALRC07	7" Aluminum Rain Cap	
ALRC08	8" Aluminum Rain Cap	

* Stainless Steel ClipCap™ and Aluminum Rain Cap sizes Also Available on Request: 9" - 10" - 12" - 14" - 16".

* Stainless Steel ClipCap™ Also Available in 24 Gauge.

ACCESSORIES - RAIN CAPS

Accessories- Econo Cap / Direct Vent Caps

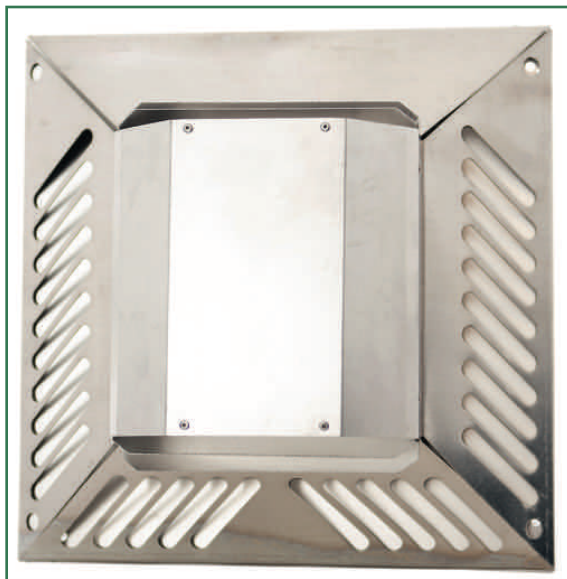
ACCESSORIES - ECONO CAP / DIRECT VENT

Econo Cap for Rigid Liner Installation.



Diam.	Code	Price
3"	TCCP03	
4"	TCCP04	
5"	TCCP05	
6"	TCCP06	
7"	TCCP07	
8"	TCCP08	

4"-7" Direct Vent Horizontal Termination Cap



CODE: DVWT47N

4" - 7" Direct Vent Vertical Termination Cap




CODE: DVWT47V

Accessories - TCE Chimney Covers



SIZE	STAINLESS STEEL	BLACK PAINTED	COPPER
9"x9"	CCSS0909	CCB0909	CCC0909
9"x13"	CCSS0913	CCB0913	CCC0913
9"x18"	CCSS0918	CCB0918	CCC0918
11"x11"	CCSS1111	CCB1111	
13"x13"	CCSS1313	CCB1313	CCC1313
13"x18"	CCSS1318	CCB1318	CCC1318
18"x18"	CCSS1818	CCB1818	CCC1818
10" Round	CCSSR10	CCBR10	
12" Round	CCSSR12	CCBR12	

 <p>Legs (4) Pack</p>	CLK4SS	CLK4	
--	--------	------	--

ACCESSORIES - CHIMNEY COVERS

Accessories - Flashings

Stainless Steel ClipFlashing™



Code	Description	Price
SSFL03	3" Stainless Steel 26 G Rain ClipCap™	
SSFL04	4" Stainless Steel 26 G Rain ClipCap™	
SSFL05	5" Stainless Steel 26 G Rain ClipCap™	
SSFL05.5	5½" Stainless Steel 26 G Rain ClipCap™	
SSFL06	6" O.D. Stainless Steel 26 G Rain ClipCap™	
SSFL06R	6" REG Stainless Steel 26 GRain ClipCap™	
SSFL07	7" Stainless Steel 26 G Rain ClipCap™	
SSFL08	8" Stainless Steel 26 G Rain ClipCap™	

Aluminum Flashing



Code	Description	Price
ALFL03	3" Aluminum Flashings	
ALFL04	4" Aluminum Flashings	
ALFL05	5" Aluminum Flashings	
ALFL05.5	5½" Aluminum Flashings	
ALFL06	6" Aluminum Flashings	
ALFL07	7" Aluminum Flashings	
ALFL08	8" Aluminum Flashings	

- * Stainless Steel ClipFlashing™ and Aluminum Flashing sizes Also Available on Request: 9" - 10" - 12" - 14" - 16".
- * Stainless Steel ClipFlashing™ Also Available in 24 Gauge.
- * Bases Also Available in 16"x16", 18"x18", 20"x20", 24"x24".
- * Standard Flashing base size = 14"x14".
- * For Custom Base Flashing Sizes, Please call for Pricing.

Accessories- Flashings - Offset - Direct Vent

Galvanized Offset Flashing - Direct Vent



CODE: DVWT47N

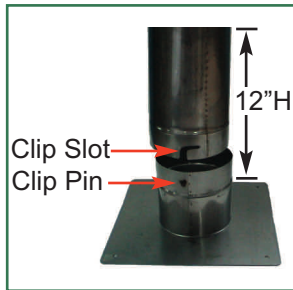
* Standard Flashing base size = 20"x20"

* For Custom Base Flashing Sizes, Please call for Pricing.

ACCESSORIES - OFFSET FLASHING DIRECT VENT

Accessories- Flashing Extensions

Stainless Steel Flashing Extensions



ACCESSORIES - FLASHINGS EXTENSIONS

Diam.	Length	Code	Description	Price
3"	12"	SSFLEXT0312	3" Diam. Ext. 12" Long	
3"	18"	SSFLEXT0318	3" Diam. Ext. 18" Long	
4"	12"	SSFLEXT0412	4" Diam. Ext. 12" Long	
4"	18"	SSFLEXT0418	4" Diam. Ext. 18" Long	
5"	12"	SSFLEXT0512	5" Diam. Ext. 12" Long	
5"	18"	SSFLEXT0518	5" Diam. Ext. 18" Long	
5.5"	12"	SSFLEXT05.512	5.5" Diam. Ext. 12" Long	
5.5"	18"	SSFLEXT05.518	5.5" Diam. Ext. 18" Long	
6" DD	12"	SSFLEXT0612	6" DD Diam. Ext. 12" Long	
6" DD	18"	SSFLEXT0618	6" DD Diam. Ext. 18" Long	
6" REG	12"	SSFLEXT06R12	6" REG Diam. Ext. 12" Long	
6" REG	18"	SSFLEXT06R18	6" REG Diam. Ext. 18" Long	
7"	12"	SSFLEXT0712	7" Diam Ext. 12" Long	
7"	18"	SSLEXT0718	7" Diam. Ext. 18" Long	
8"	12"	SSFLEXT0812	8" Diam. Ext. 12" Long	
8"	18"	SSFLEXT0818	8" Diam. Ext. 18" Long	

* Standard Extensions lengths = 12" & 18".

* For Special Lengths Including Pricing, Please Call For Info.

* For a Demonstration of Our Flashing Extension, Please Visit Our Website

* Flashing Extension Also Available in 9", 10", 12", 14" & 16" Diameters.

Accessories- Base ClipSnoutTee™

Stainless Steel 26 Gauge ClipSnoutTee™



Code	Description	Price
BT03COM	3" ClipSnoutTee™ 3pc.	
BT04COM	4" ClipSnoutTee™ 3pc.	
BT05COM	5" ClipSnoutTee™ 3pc.	
BT05.5COM	5.5" ClipSnoutTee™ 3pc.	
BT06COM	6" o.d. ClipSnoutTee™ 3pc.	
BT06RCOM	6" REG. ClipSnoutTee™ 3pc.	
BT07COM	7" ClipSnoutTee™ 3pc.	
BT08COM	8" ClipSnoutTee™ 3pc.	

*ClipSnoutTee™ 3" & 4" Standard Snout Sizes = 8". All Other Snouts = 14"

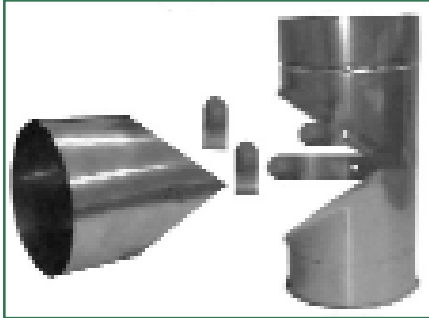
*For Special Snout Lengths Including Pricing, Please Call For Info.

*ClipSnoutTee™ Also Available in 24 Gauge S.S.

ACCESSORIES - BASE CLIPSNOUTTEE

Accessories - Standard Base Tee

Stainless Steel Standard Base Tee



ACCESSORIES - STANDARD BASE TEE

Code	Description	Price
SSBT03	3" Standard Base Tee	
SSBT04	4" Standard Base Tee	
SSBT05	5" Standard Base Tee	
SSBT05.5	5.5" Standard Base Tee	
SSBT06	6" o.d. Standard Base Tee	
SSBT06R	6" REG. Standard Base Tee	
SSBT07	7" Standard Base Tee	
SSBT08	8" Standard Base Tee	
SSBT09	9" Standard Base Tee (24 Gauge)	
SSBT10	10" Standard Base Tee (24 Gauge)	
SSBT12	12" Standard Base Tee (24 Gauge)	
SSBT14	14" Standard Base Tee (24 Gauge)	
SSBT16	16" Standard Base Tee (24 Gauge)	

* Standard Base Tee Comes With Body / Snout / Ashpan.

* Standard Base Tee diameters 3" - 8".

Accessories- Base ClipSnoutTee™ For Rigid

Stainless Steel 26 Gauge ClipSnoutTee™ For Rigid



Diam.	Code	Description	Price
3"	TCBTN03	3" Clipsnout Tee with Snout	
4"	TCBTN04	4" Clipsnout Tee with Snout	
5"	TCBTN05	5" Clipsnout Tee with Snout	
6"	TCBTN06	6" Clipsnout Tee with Snout	
7"	TCBTN07	7" Clipsnout Tee with Snout	
8"	TCBTN08	8" Clipsnout Tee with Snout	

Stainless Steel 26 Gauge ClipSnoutTee™ End Cap



Diam.	Code	Description	Price
3"	BT03C	3" Base Tee Cap For Rigid Base Tee	
4"	BT04C	4" Base Tee Cap For Rigid Base Tee	
5"	BT05C	5" Base Tee Cap for Rigid Base Tee	
6"	BT06C	6" Base Tee Cap for Rigid Base Tee	
7"	BT07C	7" Base Tee Cap For Rigid Base Tee	
8"	BT08C	8" Base Tee Cap For Rigid Base Tee	

* ClipSnoutTee™ 3" & 4" Standard Snout Sizes = 8". 5"-8" Snouts = 14"

* ClipSnoutTee™ Also Available in 9", 10", 12", 14" & 16" Diameters.

Accessories- Oval Base Tee

Stainless Steel 26 Gauge Oval Tee



ACCESSORIES - OVAL BASE TEE

Code	Description	Price
BT03OVAL	3" Oval Base Tee 3pc.	
BT04OVAL	4" Oval Base Tee 3pc.	
BT05OVAL	5" Oval Base Tee 3pc.	
BT05.5OVAL	5.5" Oval Base Tee 3pc.	
BT06OVAL	6" o.d. Oval Base Tee 3pc.	
BT06ROVAL	6" REG. Oval Base Tee 3pc.	
BT07OVAL	7" Oval Base Tee 3pc.	
BT08OVAL	8" Oval Base Tee 3pc.	

*For Oval Liner Sizes Please Refer To Our Website.

*Oval Base Tee Comes with Cap.

*Oval Base Tee Snout Length = 3"

*For Special Snout Lengths Including Pricing, Please Call For Info.

Accessories- Base Tee Snout Extensions

Stainless Steel 26 Gauge Snout Extensions



Diam.	Length	Code	Description	Price
3"	4"	BTEXT0304	3" Diameter Snout 4" long	
3"	12"	BTEXT0312	3" Diameter Snout 12" long	
3"	18"	BTEXT0318	3" Diameter Snout 18" long	
3"	24"	BTEXT0324	3" Diameter Snout 24" long	
3"	36"	BTEXT0336	3" Diameter Snout 36" long	
4"	4"	BTEXT0404	4" Diameter Snout 4" long	
4"	12"	BTEXT0412	4" Diameter Snout 12" long	
4"	18"	BTEXT0418	4" Diameter Snout 18" long	
4"	24"	BTEXT0424	4" Diameter Snout 24" long	
4"	36"	BTEXT0436	4" Diameter Snout 36" long	
5"	4"	BTEXT0504	5" Diameter Snout 4" long	
5"	12"	BTEXT0512	5" Diameter Snout 12" long	
5"	18"	BTEXT0518	5" Diameter Snout 18" long	
5"	24"	BTEXT0524	5" Diameter Snout 24" long	
5"	36"	BTEXT0536	5" Diameter Snout 36" long	
6"	4"	BTEXT0604	6" Diameter Snout 4" long	
6"	12"	BTEXT0612	6" Diameter Snout 12" long	
6"	18"	BTEXT0618	6" Diameter Snout 18" long	
6"	24"	BTEXT0624	6" Diameter Snout 24" long	
6"	36"	BTEXT0636	6" Diameter Snout 36" long	
7"	4"	BTEXT0704	7" Diameter Snout 4" long	
7"	12"	BTEXT0712	7" Diameter Snout 12" long	
7"	18"	BTEXT0718	7" Diameter Snout 18" long	
7"	24"	BTEXT0724	7" Diameter Snout 24" long	
7"	36"	BTEXT0736	7" Diameter Snout 36" long	
8"	4"	BTEXT0804	8" Diameter Snout 4" long	
8"	12"	BTEXT0812	8" Diameter Snout 12" long	
8"	18"	BTEXT0818	8" Diameter Snout 18" long	
8"	24"	BTEXT0824	8" Diameter Snout 24" long	
8"	36"	BTEXT0836	8" Diameter Snout 36" long	

*ClipSnoutTee™ 3" & 4" Standard Snout Sizes = 8". All Other Snouts = 14"

*For Special Snout Lengths Including Pricing, Please Call For Info.

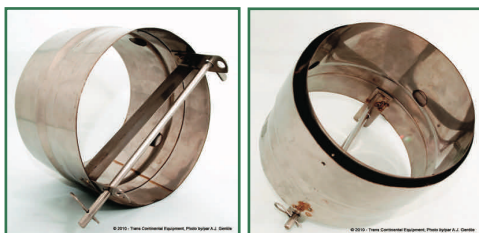
Accessories- StoveStarters

Stainless Steel 26 Gauge StoveStarter



Diam.	Code	Description	Price
3"	START03	26 Gauge Fireplace Insert	
4"	START04	26 Gauge Fireplace Insert	
5"	START05	26 Gauge Fireplace Insert	
5.5"	START05.5	26 Gauge Fireplace Insert	
6" DD	START06	26 Gauge Fireplace Insert	
6" REG	START06R	26 Gauge Fireplace Insert	
7"	START07	26 Gauge Fireplace Insert	
8"	START08	26 Gauge Fireplace Insert	

Stainless Steel 26 Gauge StoveStarter With Locking Rod.



Diam.	Code	Description	Price
5"	START05N	Insert Starter w Locking Rod	
5.5"	START05.5N	Insert Starter w Locking Rod	
6" DD	START06N	Insert Starter w Locking Rod	
6" REG	START06RN	Insert Starter w Locking Rod	

- * StoveStarters also available in 9", 10", 12", 14" and 16".
- * Locking rod only available in four sizes specified above.
- * For a Demonstration of Our Locking Rod Please Visit Our Website.

ACCESSORIES - STOVESTARTERS

Accessories - Dripless Connector

Stainless Steel Dripless Connector



Diam.	Code	Description	Price
3"	DC03	26 Gauge Dripless Connector	
4"	DC04	26 Gauge Dripless Connector	
5"	DC05	26 Gauge Dripless Connector	
5.5"	DC05.5	26 Gauge Dripless Connector	
6" DD	DC06	26 Gauge Dripless Connector	
6" REG	DC06R	26 Gauge Dripless Connector	
7"	DC07	26 Gauge Dripless Connector	
8"	DC08	26 Gauge Dripless Connector	

* Dripless Connector Also Available in 9", 10", 12", 14" and 16" = 24 Gauge

ACCESSORIES - DRIPLESS CONNECTOR

Accessories - Elbows - 30° - 45° - 90°

Stainless Steel 26 gauge Adjustable Elbows



ACCESSORIES - ELBOWS

Diam.	Code	Description	Price
3" x 30°	ELBOW0330	3" x 30° Adujustable Elbow	
4" x 30°	ELBOW0430	4" x 30° Adujustable Elbow	
5" x 30°	ELBOW0530	5" x 30° Adujustable Elbow	
5.5" x 30°	ELBOW05.530	5.5" x 30° Adujustable Elbow	
6" DD x 30°	ELBOW0630	6" DD x 30° Adujustable Elbow	
6" REG x 30°	ELBOW06R30	6" REG x 30° Adujustable Elbow	
7" x 30°	ELBOW0730	7" x 30° Adujustable Elbow	
8" x 30°	ELBOW0830	8" x 30° Adujustable Elbow	

Diam.	Code	Description	Price
3" x 45°	ELBOW0345	3" x 45° Adujustable Elbow	
4" x 45°	ELBOW0445	4" x 45° Adujustable Elbow	
5" x 45°	ELBOW0545	5" x 45° Adujustable Elbow	
5.5" x 45°	ELBOW05.545	5.5" x 45° Adujustable Elbow	
6" DD x 45°	ELBOW0645	6" DD x 45° Adujustable Elbow	
6" REG x 45°	ELBOW06R45	6" REG x 45° Adujustable Elbow	
7" x 45°	ELBOW0745	7" x 45° Adujustable Elbow	
8" x 45°	ELBOW0845	8" x 45° Adujustable Elbow	

Diam.	Code	Description	Price
3" x 90°	ELBOW0390	3" x 90° Adujustable Elbow	
4" x 490	ELBOW0490	4" x 90° Adujustable Elbow	
5" x 90°	ELBOW0590	5" x 90° Adujustable Elbow	
5.5" x 90°	ELBOW05.590	5.5" x 90° Adujustable Elbow	
6" DD x 90°	ELBOW0690	6" DD x 90° Adujustable Elbow	
6" REG x 90°	ELBOW06R90	6" REG x 90° Adujustable Elbow	
7" x 90°	ELBOW0790	7" x 90° Adujustable Elbow	
8" x 90°	ELBOW0890	8" x 90° Adujustable Elbow	

* Also Available in 9", 10", 12" 14" and 16".

Accessories- Drop-In® + Drop-Up®

Stainless Steel 26 Gauge Supports



ACCESSORIES - DROP-IN & DROP-UP

Diam.	Code	Description	Price
3"	SSDI03	3" Drop-In®/Drop-Up® Support	
4"	SSDI04	4" Drop-In®/Drop-Up® Support	
5"	SSDI05	5" Drop-In®/Drop-Up® Support	
5.5"	SSDI05.5	5.5" Drop-In®/Drop-Up® Support	
6" DD	SSDI06	6" DD Drop-In®/Drop-Up® Support	
6" REG	SSDI06R	6" REG Drop-In®/Drop-Up® Support	
7"	SSDI07	7" Drop-In®/Drop-Up® Support	
8"	SSDI08	8" Drop-In®/Drop-Up® Support	

* Also Available in 9", 10", 12" 14" and 16" = 24 Gauge